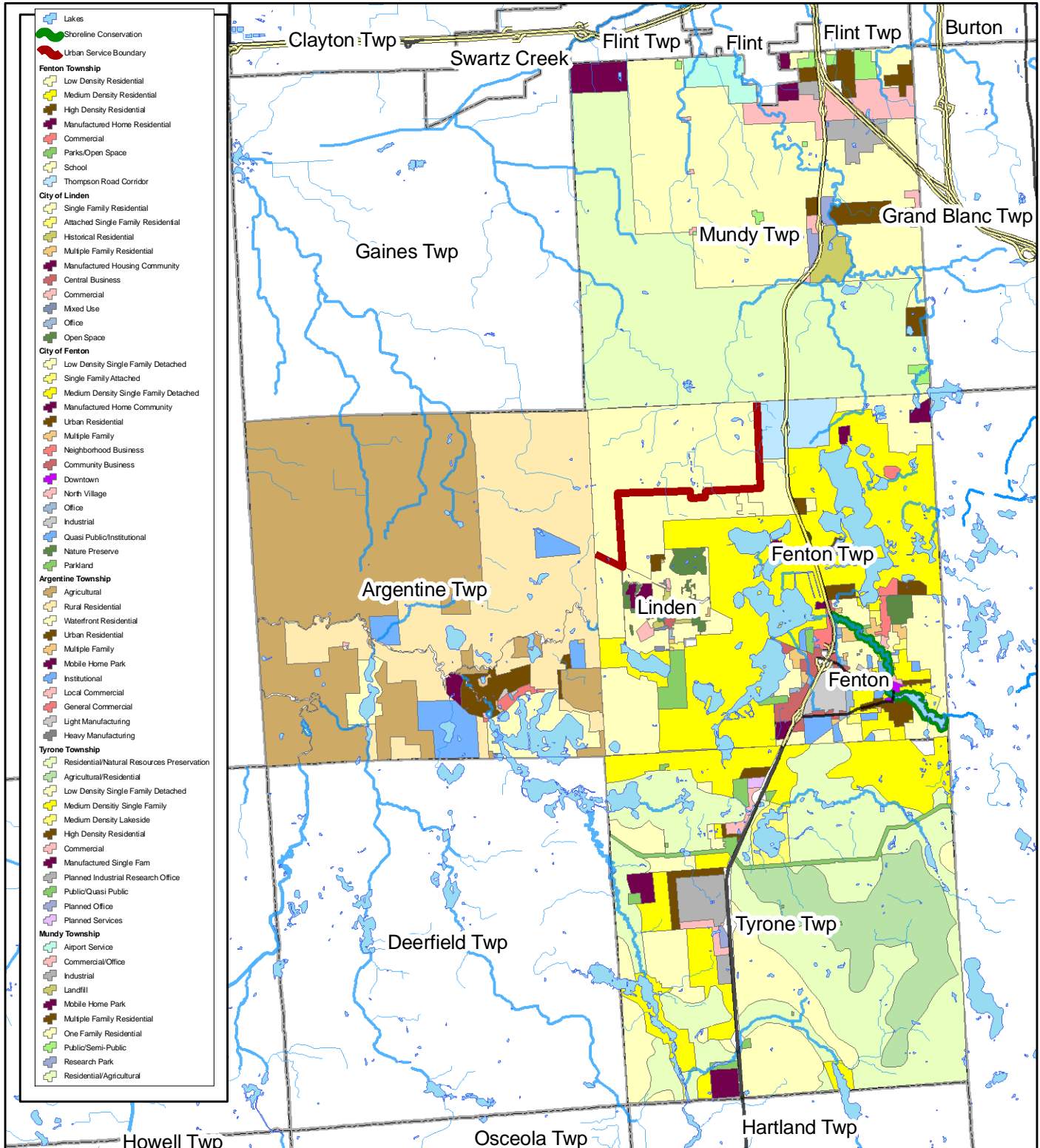
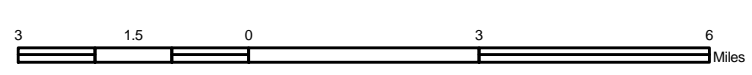


# Southern Lakes Regional Planning Initiative

# Future Land Use



- Lakes
- Shoreline Conservation
- Urban Service Boundary
- Fenton Township**
- Low Density Residential
- Medium Density Residential
- High Density Residential
- Manufactured Home Residential
- Commercial
- Parks/Open Space
- School
- Thompson Road Corridor
- City of Linden**
- Single Family Residential
- Attached Single Family Residential
- Historical Residential
- Multiple Family Residential
- Manufactured Housing Community
- Central Business
- Commercial
- Mixed Use
- Office
- Open Space
- City of Fenton**
- Low Density Single Family Detached
- Single Family Attached
- Medium Density Single Family Detached
- Manufactured Home Community
- Urban Residential
- Multiple Family
- Neighborhood Business
- Community Business
- Downtown
- North Village
- Office
- Industrial
- Quasi Public/Institutional
- Nature Preserve
- Parkland
- Argentine Township**
- Agricultural
- Rural Residential
- Waterfront Residential
- Urban Residential
- Multiple Family
- Mobile Home Park
- Institutional
- Local Commercial
- General Commercial
- Light Manufacturing
- Heavy Manufacturing
- Tyrone Township**
- Residential/Natural Resources Preservation
- Agricultural/Residential
- Low Density Single Family Detached
- Medium Density Single Family
- Medium Density Lakeside
- High Density Residential
- Commercial
- Planned Industrial Research Office
- Public/Quasi Public
- Planned Office
- Planned Services
- Mundy Township**
- Airport Service
- Commercial/Office
- Industrial
- Landfill
- Mobile Home Park
- Multiple Family Residential
- One Family Residential
- Public/Semi-Public
- Research Park
- Residential/Agricultural



1:158,302

**3**  
Sources: City of Fenton  
Fenton Township  
City of Linden  
Argentine Township  
Tyrone Township  
Mundy Township  
Michigan Geographic Framework Data, 2000

Created by: S. McDoneill, September 2005  
©Center for Applied Environmental Research

