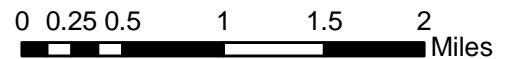
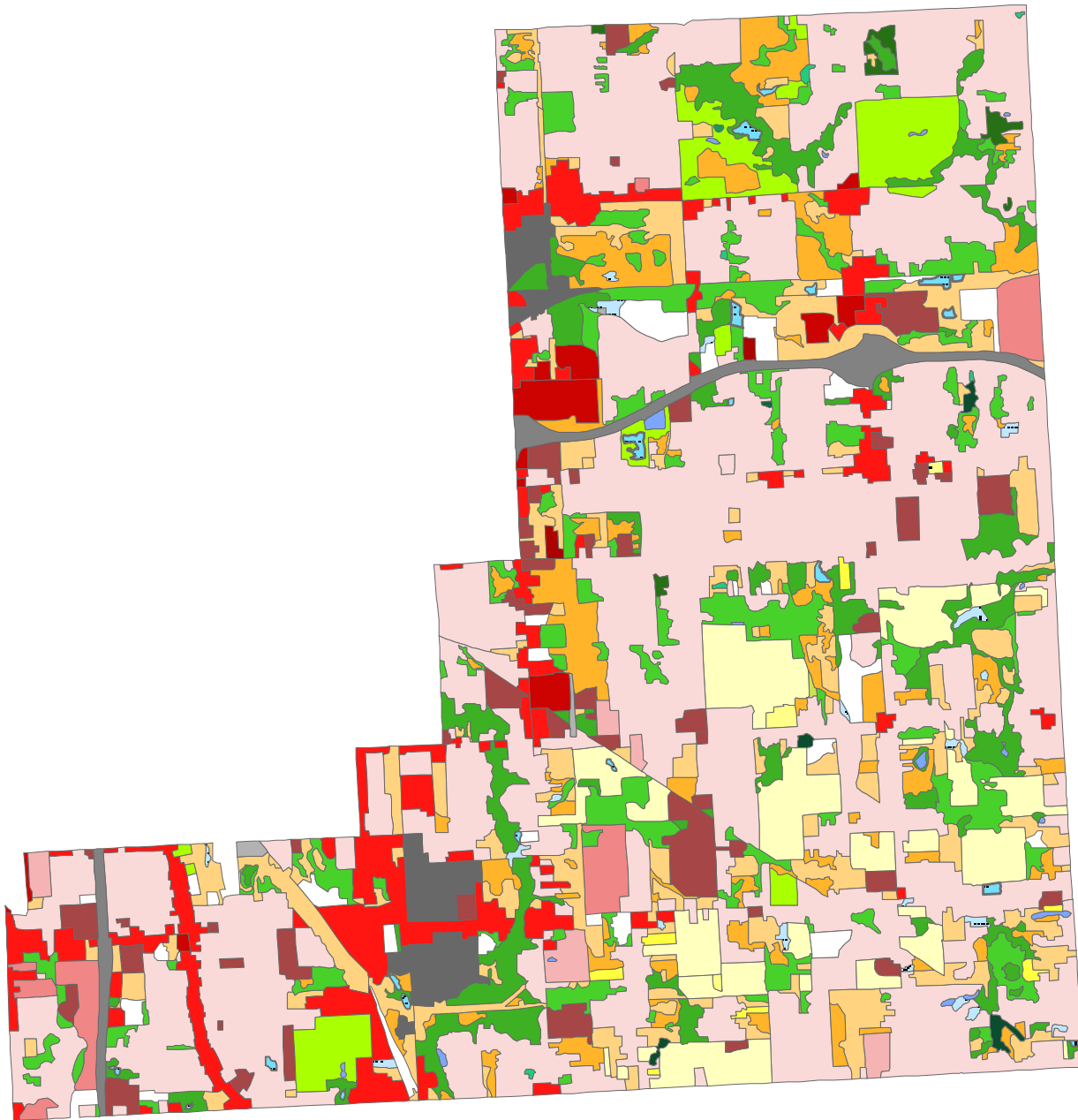
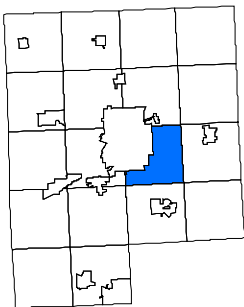


City of Burton - 2003 Land Use / Cover



Genesee County



Legend

Class

- | | | |
|--|---|-----------------------|
| Multi-family, low rise | Under construction / construction sites | Lakes |
| Single family / duplex | Cropland | Reservoirs |
| Manufactured home park | Orchards, bush-fruits | Shrub swamps |
| Shopping center / malls / retail centers | Confined feeding operations | Non-forested wetlands |
| Secondary / neighborhood or rural business | Permanent pasture | Barren |
| Institutional | Other agriculture | |
| Office park | Farmsteads | |
| Industrial | Grasses and forbs | |
| Air transportation | Shrubs | |
| Road transportation | Central hardwoods | |
| Utilities | Lowland hardwoods | |
| Extractive | Pine | |
| Outdoor recreation | Other upland conifers | |
| Cemeteries | Lowland conifers | |
| Vacant | Upland hardwoods and pine associations | |
| | Lowland conifers with hardwood associations | |

